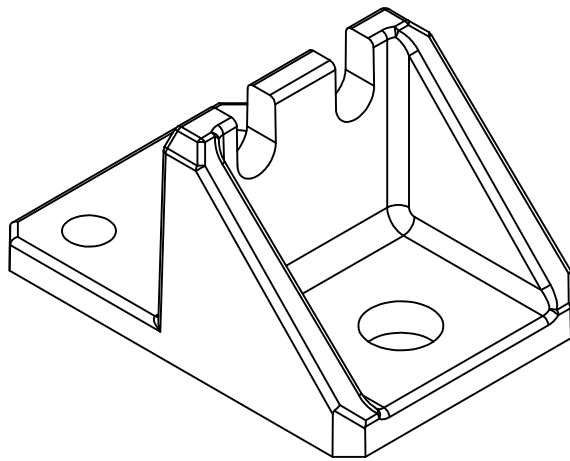
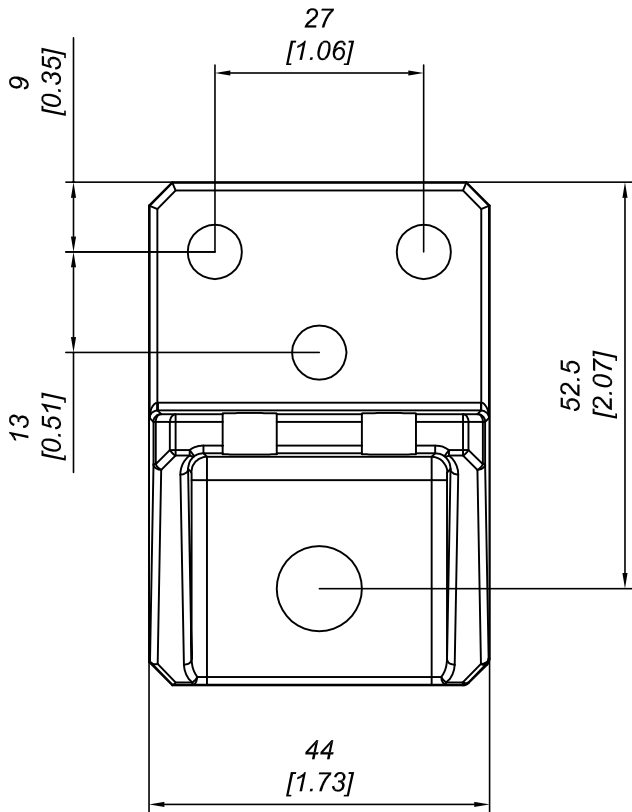
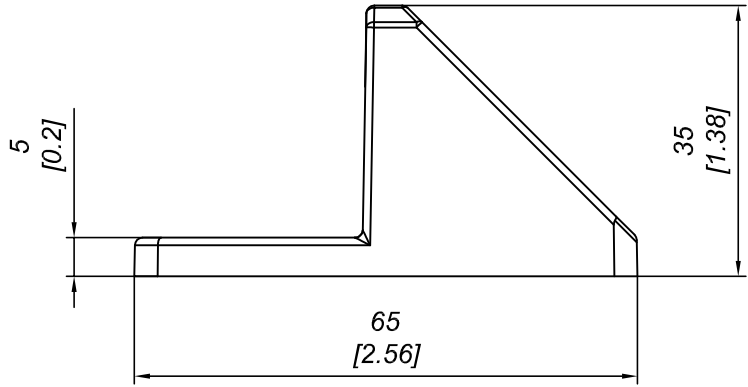
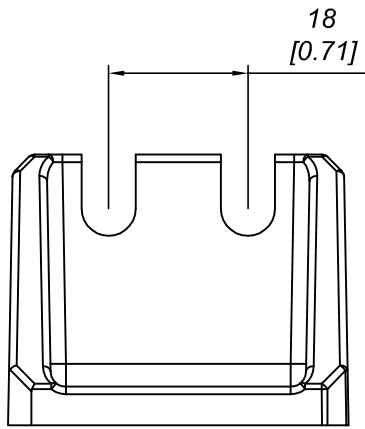


Q.TÀ SCATOLA PACKAGE Q.TY	150
PESO SCATOLA PACKAGE WEIGHT	10 kg 22.05 lb
DIMENSIONI SCATOLA PACKAGE DIMENSION	22x35x22 cm 8.66x13.77x8.66 inch



DESCRIZIONE

STAFFA IN ALLUMINIO

DESCRIPTION

ALUMINIUM BRACKET

PRO-LAM s.r.l.
ALLUMINIO

MATERIALE
MATERIAL ALLUMINIO AB-46100
ALLUMINIUM AB-46100

TRATTAMENTO
TREATMENT SABBIATURA
SANDBLAST

SCALA
SCALE 1:1

DATA
DATE 15/07/2011

PESO TEORICO
THEORETICAL WEIGHT -- kg
-- lb

NORMA TOLLERANZA
STANDARD TOLLERANCE -

CODICE
CODE ABF

FORMATO
SIZE A4



Questo disegno è di proprietà riservata alla ditta PRO-LAM ALLUMINIO s.r.l. A termini di legge è assolutamente vietato riprodurre o comunicare a terzi il contenuto del presente disegno.
This drawing is a property of PRO-LAM ALLUMINIO s.r.l. This drawing shall not be reproduced or released to others except as otherwise authorized by PRO-LAM ALLUMINIO s.r.l.