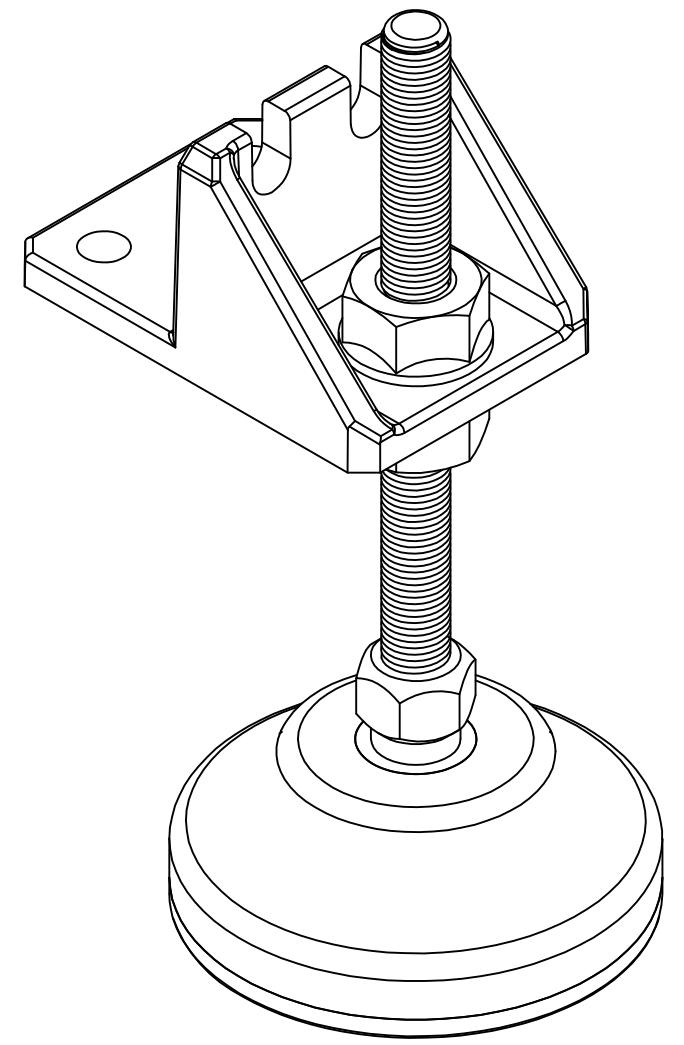
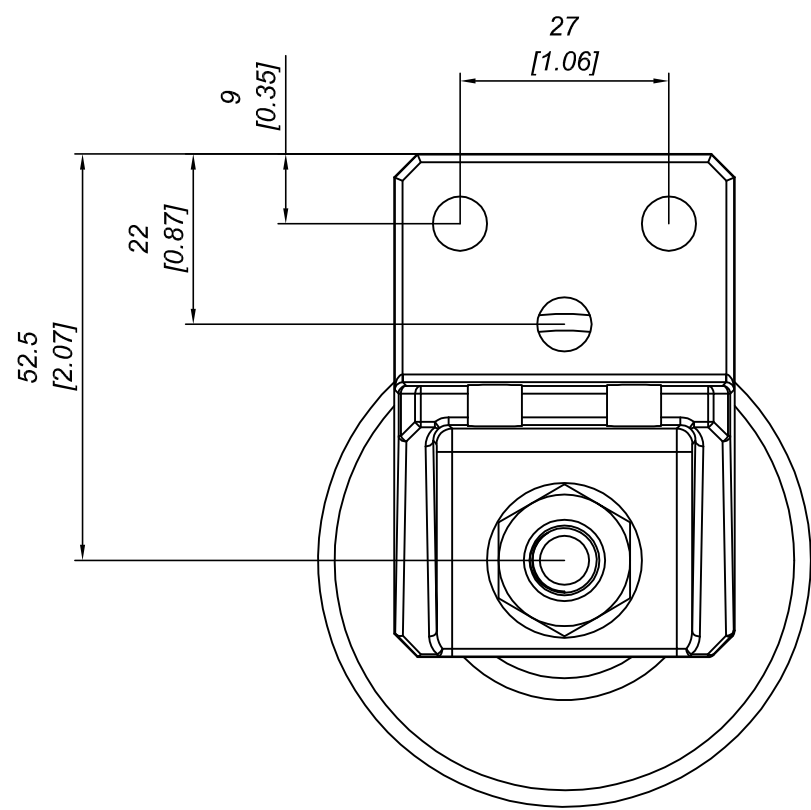
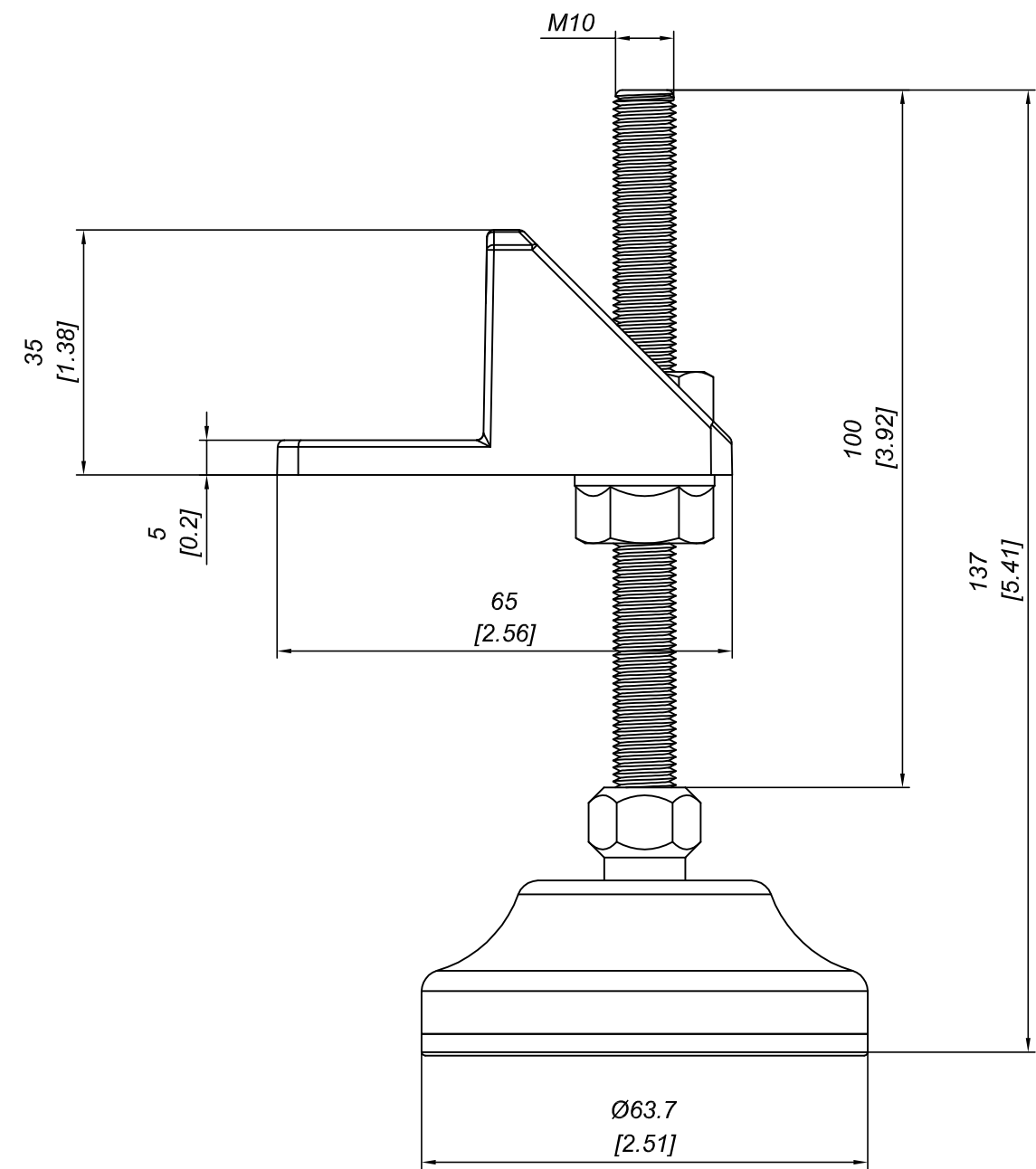
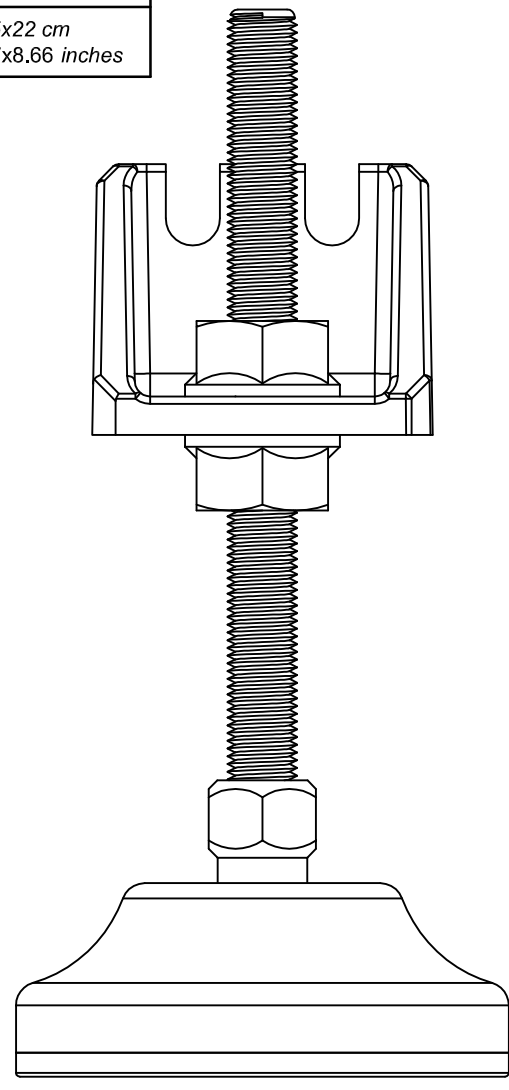


Q.TÀ SCATOLA PACKAGE Q.TY	50
PESO SCATOLA PACKAGE WEIGHT	8 kg 17.64 lbs
DIMENSIONI SCATOLA PACKAGE DIMENSION	22x35x22 cm 8.66x13.77x8.66 inches



DESCRIZIONE STAFFA CON PIEDINO REGOLABILE		PRO-LAM s.r.l. ALLUMINIO	
DESCRIPTION BRACKET WITH ADJUSTABLE FOOT			
MATERIALE MATERIAL PA6 30 % FV_SV + AB-46100 + GALVANIZE STEEL	TRATTAMENTO TREATMENT Sabbiatura / Nylon Blasting finishing / Nylon	SCALA SCALE 1:1	DATA DATE 15/07/2011
PESO TEORICO THEORETICAL WEIGHT -- kg -- lbs	NORMA TOLLERANZA STANDARD TOLERANCE --	CODICE CODE ABF-NF65-100x10	FORMATO SIZE A3

Questo disegno è di proprietà riservata alla ditta PRO-LAM ALLUMINIO s.r.l. A termini di legge è assolutamente vietato riprodurre o comunicare a terzi il contenuto del presente disegno. This drawing is a property of PRO-LAM ALLUMINIO s.r.l. This drawing shall not be reproduced or released to others except as otherwise authorized by PRO-LAM ALLUMINIO s.r.l.