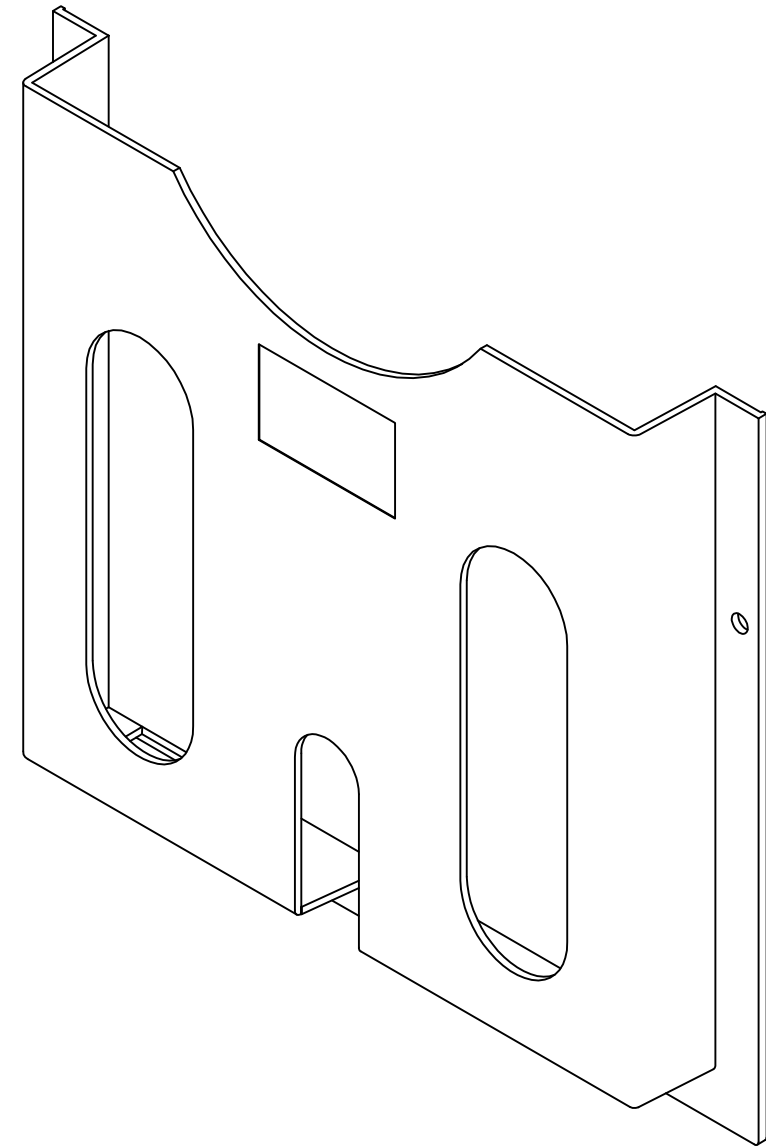
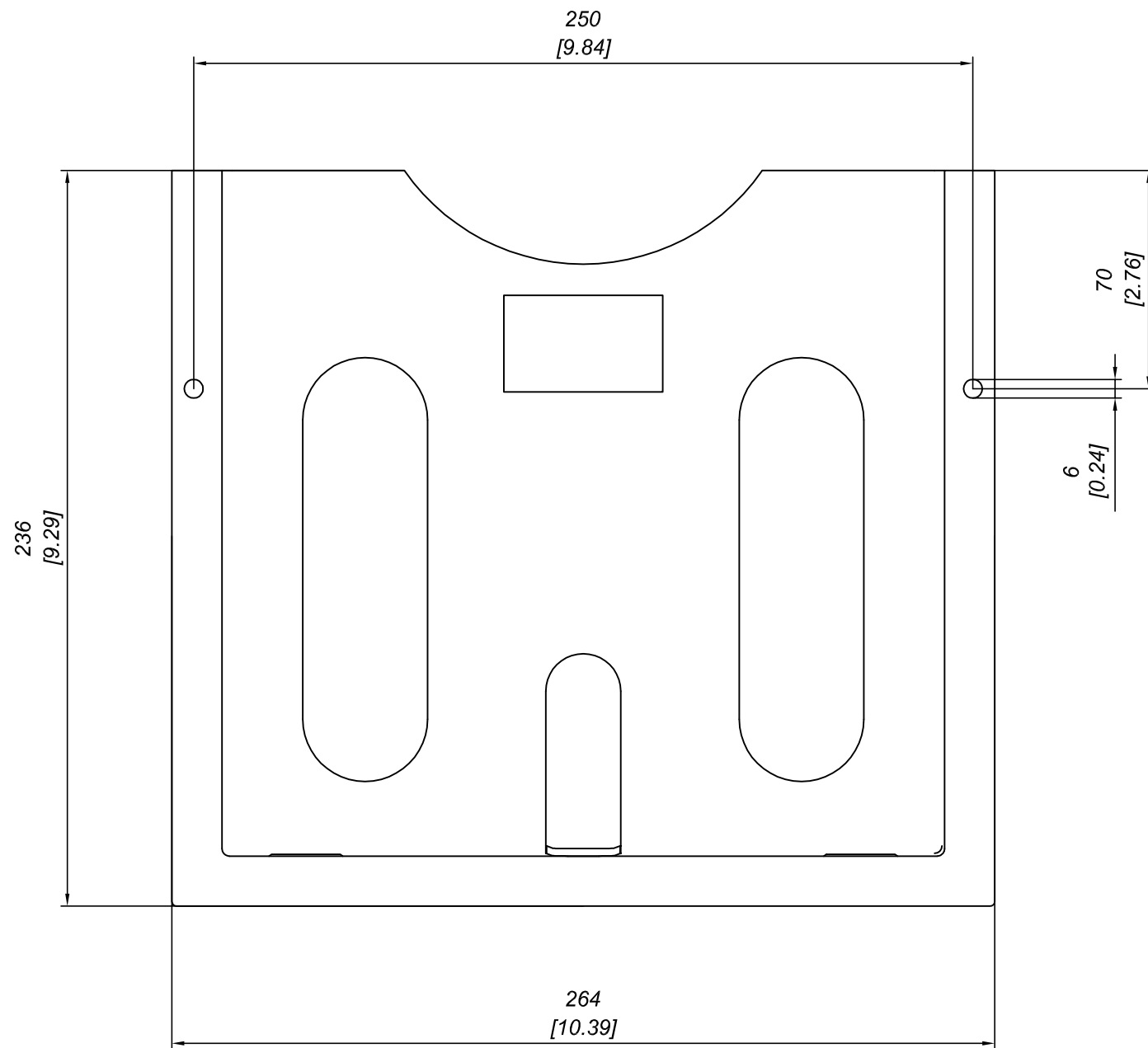
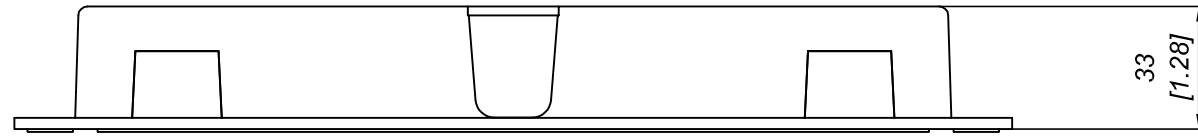


| | |
|---|--------------------|
| Q.TÀ SCATOLA PACKAGE Q.TY | 25 pcs |
| PESO SCATOLA PACKAGE WEIGHT | --- Kg --- Lbs |
| DIMENSIONI SCATOLA PACKAGE DIMENSION | --- cm --- inch |



| | | | |
|---|---|-------------------------|----------------------------|
| DESCRIZIONE Tasca porta documenti | | PRO-LAM s.r.l. | |
| DESCRIPTION Plastic pocket for documents | | ALLUMINIO | |
| MATERIALE MATERIAL PS | TRATTAMENTO TREATMENT - | SCALA SCALE 2:1 | DATA DATE 07/02/2011 |
| PESO TEORICO THEORETICAL WEIGHT - kg - lbs | NORMA TOLLERANZA STANDARD TOLERANCE - | CODICE CODE NP001 | FORMATO SIZE A3 |

Questo disegno è di proprietà riservata alla ditta PRO-LAM ALLUMINIO s.r.l. A termini di legge è assolutamente vietato riprodurre o comunicare a terzi il contenuto del presente disegno. This drawing is a property of PRO-LAM ALLUMINIO s.r.l. This drawing shall not be reproduced or released to others except as otherwise authorized by PRO-LAM ALLUMINIO s.r.l.